

# SIMPLIFY AND ACCELERATE EMC TESTING:

## SignalVu-PC with EMCVu

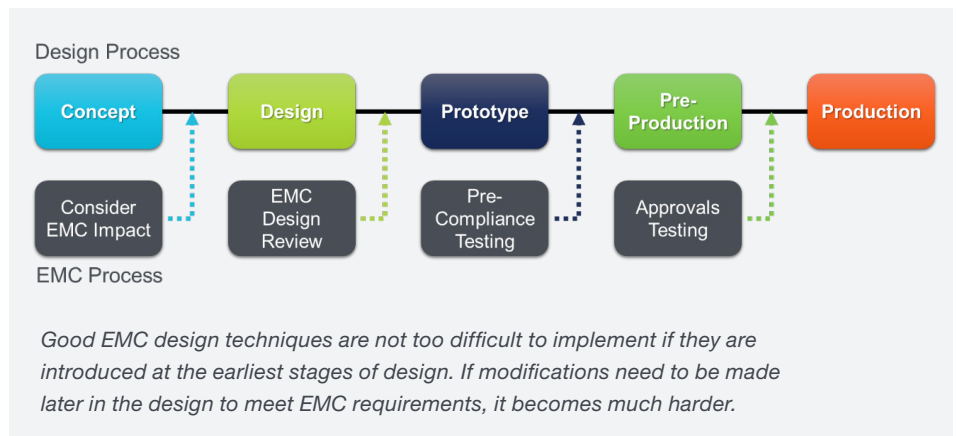
### 50% of projects fail EMC compliance the first time\*

If you're developing a product, you're making financial, time, and sometimes, an emotional investment in getting the product to market. The last thing you want is to get held up by compliance testing failures.

Incorporating pre-compliance testing into your development process reduces project risks and costs, increasing the probability of successfully passing EMI compliance testing the first time. This can save time and thousands of dollars.

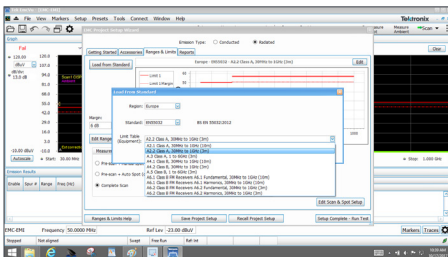
- Identify potential EMI/EMC issues early in development
- Get immediate feedback on the impact of design changes
- Test on your schedule
- Increase confidence in your product before you take it to the test house

Starting at \$26,000 USD for a complete solution, how can you not invest in pre-compliance testing?



#### Compliance testing cost per submission for FCC and CE

| TEST                   | FCC                | FCC + CE            |
|------------------------|--------------------|---------------------|
| Unintentional Radiator | \$1,000 - \$2,000  | \$5,000 - \$10,000  |
| Intentional Radiator   | \$7,000 - \$15,000 | \$10,000 - \$20,000 |



#### Take the Mysteries out of EMI/EMC Test Setup

EMI/EMC pre-compliance testing doesn't have to be hard, excessively time consuming or expensive. Developed with customer input, EMCVu delivers:

- An easy-to-use setup wizard
- Built-in standards and accessory setup with push-button selection
- Ambient noise calibration and comparison
- Advanced debug functionality

## Speed Up Troubleshooting and Debug

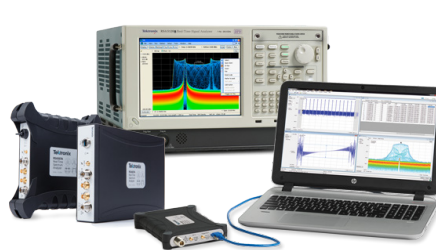
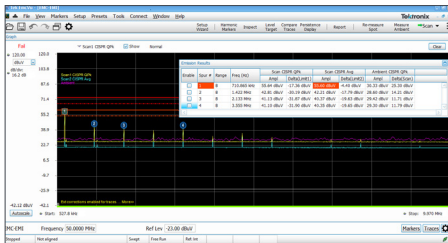
EMCVu lets you quickly identify areas of concern to streamline testing and debugging activities. Quickly analyze suspect frequencies in more detail using a near-field probe to find the source of emission. Features include:

- Harmonic Markers: Find emissions at harmonics of a known frequency.
- Multiple Traces: Overlay multiple traces to compare the Equipment Under Test (EUT) to Ambient Noise or previous iterations of a Device.
- Automated or manual multi-failure re-measurement: Quickly determine if a failure is intermittent or reoccurring.
- Automated reporting to quickly summarize EUT changes and the result.



## A Complete Pre-compliance Test Solution

Starting at \$26,000 for a complete EMC pre-compliance testing solution including software, spectrum analyzers, accessories and probes, Tektronix provides market leading ease of use and performance to support your needs.



### EMCVu Software

Tektronix EMI/EMC pre-compliance solution starts with SignalVu-PC with EMCVu software. As a plug-in to SignalVu-PC, EMCVu provides a single user interface for all your pre-compliance needs.

### Spectrum Analyzers

Tektronix offers a full line of Real-Time Spectrum Analyzers from the affordable RSA306B to the high performance RSA5000 Series. All Tektronix spectrum analyzers include SignalVu software for comprehensive spectrum analysis. Tektronix also offers the MDO400C Oscilloscope with a built in spectrum analyzer.

### Accessories

Tektronix offers a complete set of validated accessories including antennas, Line Impedance Stabilization Networks and pre-amplifiers available in bundles or separately for conducted and radiated tests.

Learn more about Tektronix EMC Pre-compliance test solution at [tek.com/EMC-pre-compliance-testing](http://tek.com/EMC-pre-compliance-testing)

TEK.COM

Copyright © 2018, Tektronix. All rights reserved. Tektronix and Keithley products are covered by U.S. and foreign patents, issued and pending. Information in this publication supersedes that in all previously published material. Specification and price change privileges reserved. TEKTRONIX, TEK and Keithley are registered trademarks of Tektronix, Inc. All other trade names referenced are the service marks, trademarks or registered trademarks of their respective companies.

01/18 EA 37W-61346-1



## Configuration Guide

### 1 – Choose a Spectrum Analyzer

|                 | MDO4000    | RSA300  | RSA500/600       | RSA5000      |
|-----------------|------------|---------|------------------|--------------|
| Start Freq      | 9 kHz      | 9 kHz   | 9 kHz            | 1 Hz         |
| Max Freq        | 3/6GHz     | 6.2 GHz | 7.5 GHz          | 26.5 GHz     |
| Demod BW        | Up To 3GHz | 40 MHz  | 40MHz            | Up to 165MHz |
| CISPR QP Det    | N          | Y       | Y                | Y            |
| Real Time       | N          | Y       | Y                | Y            |
| Tracking Gen    | N          | N       | Y (Option 4)     | N            |
| Battery Powered | N          | N       | Y (RSA600A Only) | N            |
| Audio Demod     | N          | Y       | Y                | Y            |
| EMCVu Support   | Y          | Y       | Y                | Y            |

### 2 – Choose an Antenna and Accessories for Radiated Measurements

|            | EMI-BCON-ANT | EMI-CLP-ANT |
|------------|--------------|-------------|
| Start Freq | 25 MHz       | 300 MHz     |
| Stop Freq  | 300 MHz      | 1GHz        |

| ACCESSORIES DESCRIPTION | PART NUMBER    |
|-------------------------|----------------|
| Battery Powered Pre-amp | EMI-PREAMP     |
| Antenna Tripod          | EMI-TRIPOD     |
| Bundle (All above)      | EMI-RE-HWPARTS |

Note: Other accessories are available

### 3 – Choose a LISN for Conducted Testing

|            | EMI-LISN5uH | EMI-LISN50uH-xx <sup>1</sup> |
|------------|-------------|------------------------------|
| DC         | Y           | N                            |
| AC         | N           | Y                            |
| RF Limiter | N           | Y                            |

Note<sup>1</sup>: Order the EMI-LISN50uH-xx based on the country power plug type of the devices you intend to test: -US (NEMA 5-15), -EU (Schuko CE7/4), -GB (BS1363)

### 4 – Choose Near Field Probe Set

| DESCRIPTION                | PART NUMBER       |
|----------------------------|-------------------|
| E + H FIELD PROBES         | EMI-NF-PROBE      |
| 20 dB Near Field Amplifier | EMI-NF-AMP        |
| Bundle (Probes + Amp)      | EMI-DEBUG-HWPARTS |

[UK.TEK.COM](http://UK.TEK.COM)

