

## XJTAG Systems

XJTAG offers a range of software packages to meet your company's requirements.

**Test Developer Pro** contains the full suite of boundary scan applications – XJDeveloper, XJInvestigator, XJRunner and XJAnalyser.

**Test Developer Pro + XJIO** has all these software applications plus an XJIO board. This allows you to improve coverage by testing all the way through the connectors on your board.



## XJDeveloper

Test and Programming Development & Debug Environment

XJDeveloper's intuitive IDE makes it quick and easy to set up your tests for a circuit board.

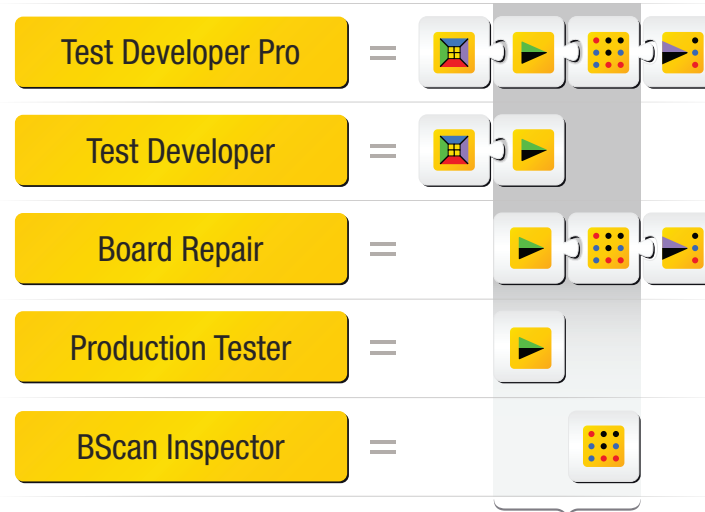
An automatically generated connection test will check for short circuit faults between accessible nets, stuck-at faults, pull resistor faults and some open circuit faults.

You can add further test coverage by using the built-in library of test models to interact with non-JTAG devices such as Flash, RAM, Ethernet, A/D, Logic, I<sup>2</sup>C, SPI, PCI, etc.

Tests can be set up as soon as board design is complete, and a test coverage report produced. This process highlights certain design issues when they are still easily fixed, before building prototypes.

The integrated XJRunner allows you to run the full test system during board bring-up. A standalone XJRunner license is included so you can test deployment before sending to production.

## Select your XJTAG software package



*Standalone versions of XJRunner and/or XJAnalyser are also included with your integrated environment's license*

### XJDemo & Tutorials



The XJDemo board and interactive tutorials guide you through developing your first test system with XJTAG.

### Integration



You can integrate XJTAG with ATEs, test executives such as NI LabVIEW™, NI LabWindows™ or custom applications written in Visual Basic and C#.

### Customisation/Consultancy



XJTAG can produce full turnkey test systems or individual models to meet your test and programming requirements.

### JTAG Chain Debugger



Included with all packages. Helps troubleshoot a faulty JTAG chain. Check the integrity of JTAG signals, calculate maximum JTAG clock speed.

### XJFlash



Using the optional XJFlash module you can improve flash programming speeds up to 50-fold with certain flash/FPGA configurations.

### Support & Maintenance



You get technical support via email, phone and web meetings, bug-fixes and product/XJEase Library updates. First year included, then optional renewal, contact your local distributor for details.



## XJInvestigator

Manufacturing Repair/Rework Station

Much more than a production line test tool, XJInvestigator is a repair focused, integrated test and debug environment for fault analysis, helping you efficiently recover your failing boards.

XJInvestigator has all of the features of XJRunner and XJAnalyser plus extra debug features from XJDeveloper (see the XJInvestigator product sheet for more details).



## XJAnalyser

Prototype Board Bring-up & Real-time Graphical Board Debug

Using the graphical interface you can interact with devices in your JTAG chain to debug your boards. You simply click on a pin to control its state – no code required.



## XJRunner

Run-time Manufacturing Test & Programming Environment

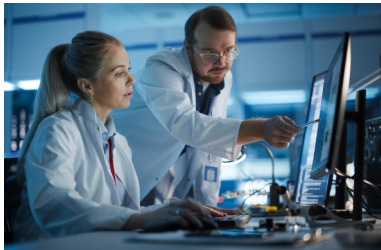
XJRunner allows you to execute XJDeveloper tests. It provides high precision fault information, including integrated Layout and Schematic Viewers, to help you with easy fault-finding.

Privilege levels ensure that users see a suitable interface, and can prevent tests being skipped. Log files are produced for audit/QA purposes.

You can use XJRunner for parallel testing and programming using auxiliary controllers or an XJQuad.

## Select your hardware features

XJTAG is easy to use on multiple machines. Licenses are not locked to a PC; they can be stored in the hardware interface or taken from a network license server, while any of these portable hardware options allow you to connect your computer with your circuit.



JTAG Controllers														Connection	
XJLink2	Benchtop development and test	✓	✓	✓	✓	1	4	✓	✓	✓	✓	✓	✓	166	USB
XJQuad	Production	✓	✓	✓	✓	4	4	✓	✓	✓	✓	✓	✓	166	USB
PXI-XJLink2	LabVIEW integration	✓	✓	✓	✓	1	4	✓	✓	✓	✓		✓	166	PXI
XJLink2-3030	High volume / test integration	✓	✓	✓	✓	1	4	✓	✓	✓	✓			166	SPEA 3030
XJLink2-3070	High volume / test integration	✓	✓	✓	✓	1	4	✓	✓	✓	✓			166	Keysight i3070
XJLink2-CFM	High volume / test integration	✓	✓	✓	✓	1	4	✓	✓	✓	✓			166	Teradyne TestStation

- Configurable voltages
- Frequency measurements
- Voltage banks
- Voltage measurements
- Number of JTAG controllers
- TAPs per JTAG controller
- GPIO on pins
- Adjustable JTAG signal termination
- Automatic signal skew control
- Adjustable signal slew
- Button to start tests
- Visual indication of test status
- TCK frequencies up to (MHz)

### XJLink2



XJLink2 is an enhanced portable JTAG controller using USB 2.0.

The small, lightweight design means an XJLink2 can easily be taken to the Unit Under Test (UUT), while a number of advanced features make it easy to connect to a wide range of circuit boards.

### XJQuad



XJQuad is a 4-port version of the XJLink2 USB-to-JTAG controller. It is particularly suitable for manufacturers.

Can be used for testing 4 boards simultaneously or independently.

### PXI-XJLink2



PXI-XJLink2 allows you to easily use XJTAG in PXI-based test systems.

A full set of integration interfaces and examples are installed with XJTAG to allow easy integration into test executives such as LabVIEW™ and LabWindows™ or bespoke .NET applications.

### XJLink2-3030



The XJLink2-3030, approved by SPEA, provides convenient, integrated access to XJTAG's powerful boundary scan test and programming tools from SPEA 3030™ ICT bed-of-nails board testers.

It fits into one slot on the SPEA 3030 XJLink2 Carrier Board and is fully integrated into the SPEA Leonardo environment.

### XJLink2-3070



The XJLink2-3070, approved by Keysight Technologies, provides convenient, integrated access to XJTAG's boundary scan test and programming tools from Keysight (Agilent) i3070™ ICT machines.

It fits into one slot on the Keysight (Agilent) i3070 utility card and is fully integrated into the BTBasic environment.

### XJLink2-CFM



The XJLink2-CFM is an advanced multi-TAP JTAG controller offering convenient, integrated access to XJTAG's test and programming tools from Teradyne's TestStation™ In-Circuit Test Systems.

The controller fits into one slot on the Teradyne Multi-Function Application Board.

### Expansion Hardware

Expansion Hardware	Order code
XJIO Board	XJTAG-IOC-0012



### Services

Services	Order code
Consultancy	Price on application (please contact your local distributor)